

**MEF EMC-FILTER 1-PHASE 2-STAGE**

I:6A U:250 VAC/300 VDC snap on

Art.No.: 10471

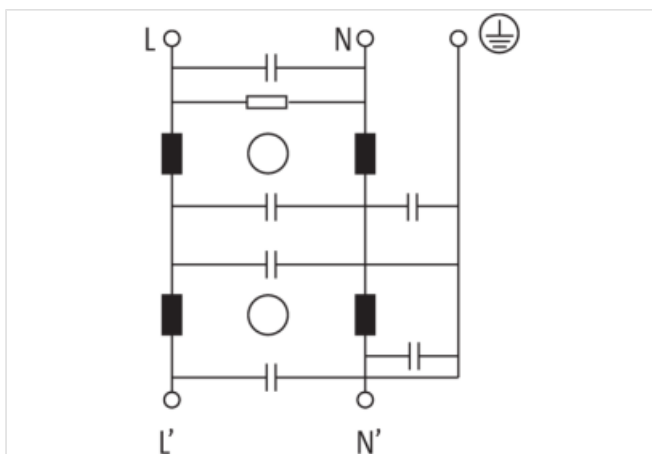
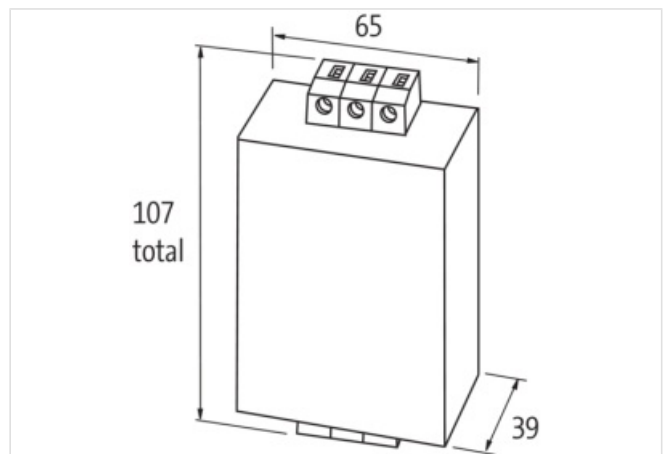
Weight: 0.45

Country of origin: IT

Model designation: MEF 1/2 AS 6A T

Current: 6 A

DIN-rail mountable

Attenuation curves on request.  
against symmetrical interferences**Link to Product****Illustration**

Product may differ from Image

**Commercial data**

URL Webshop

<https://shop.murrelektronik.com/10471>

GTIN

4048879029315

Suitable for application range	Power Supply Units, Devices with fast switching frequency and high repetition rate, in DC networks, before transformers, for frequency converters
Suitable for type of fault	asymmetrical interferences
ECLASS-6.0	27130806
ECLASS-6.1	27420201
ECLASS-7.0	27420290
ECLASS-7.1	27420290
ECLASS-8.0	27420290
ECLASS-8.1	27420290
ECLASS-9.0	27420208
ECLASS-9.1	27420290
ECLASS-10.0.1	27420290
ECLASS-10.1	27420208
ECLASS-11.0	27420290
ECLASS-11.1	27420208
ECLASS-12.0	27420208
ECLASS-13.0	27420290
ECLASS-14.0	27420290
ETIM-5.0	EC002498
ETIM-6.0	EC002498
ETIM-7.0	EC002498
ETIM-8.0	EC002498
EAN	4048879029315

#### Electrical data

Leakage current max.	5 mA @ 250 V AC, 50 Hz
----------------------	------------------------

#### Electrical data | Supply

Power frequency	50 ... 60 Hz
Operating voltage AC max.	250 V
Operating voltage DC max.	300 V

#### Electrical data | Output

Overload current	18× (IN t) max. 0.5 ms; 1.5× (IN t) max. 1 min. (1× per hour)
------------------	---

#### Installation

Connection cross-section solid min.	0.2 mm <sup>2</sup>
Connection cross-section solid max.	6 mm <sup>2</sup>
Connection cross-section stranded/fine-stranded min.	0.2 mm <sup>2</sup>
Connection cross-section stranded/fine-stranded max.	4 mm <sup>2</sup>
AWG number solid min.	24
AWG number solid max.	9
AWG number stranded/fine stranded min.	24
AWG number stranded/fine stranded max.	11

#### Device protection | Electrical

Insulation test voltage L-N	2.7 kV
Insulation test voltage L-L	2.1 kV
Duration insulation test voltage	2 s

#### Mechanical data | Mounting data

Height	107 mm
Width	56 mm
Depth	39 mm
Mounting method	geschnappt
Suitable for mounting type	Mounting rail TH35, (EN 60715)

#### Environmental characteristics | Climatic

Climatic category (EN IEC 60068-1)

25/085/21

**Connection type 3**

Family construction form	terminal
No. of poles	1
Gender	female
Color contact carrier	green-yellow
Connection	Screw terminals SK
PIN 1	PE
Family construction form	terminal
No. of poles	2
Color contact carrier	gray
Connection	Screw terminals SK
PIN 1	L
PIN 2	N
Family construction form	terminal
No. of poles	2
Color contact carrier	gray
Connection	Screw terminals SK
PIN 1	L'
PIN 2	N'