

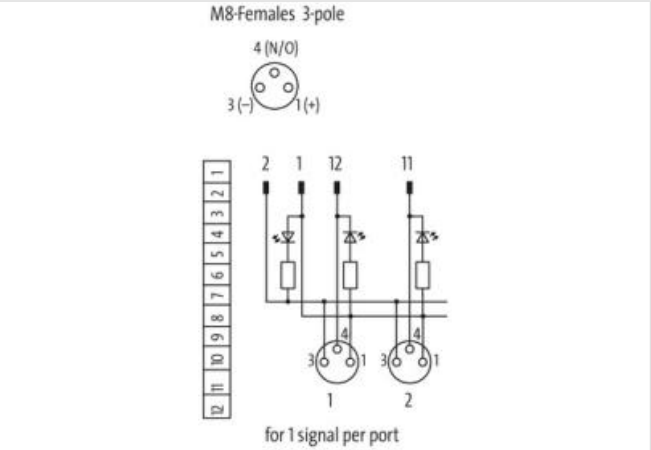
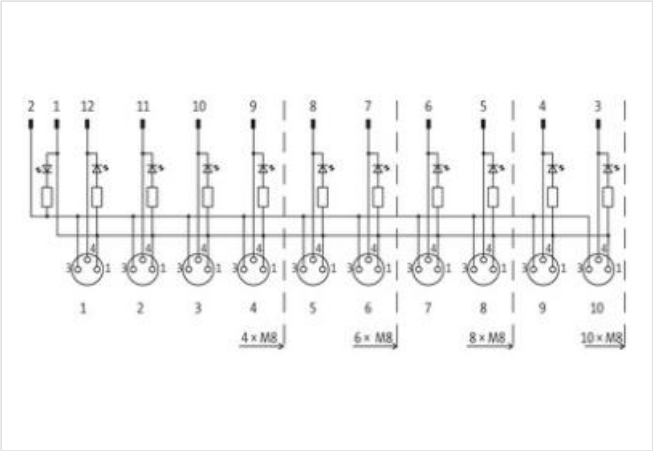
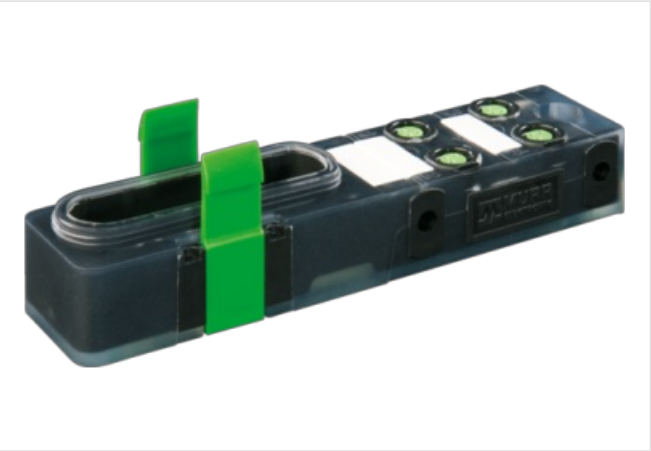
EXACT8, 4XM8, 3 POLE BASIC HOUSING, NPN-LED'S

Without connector cable

4-way, 3-pole
Inline face or side mounting
for NPN signals 24 V DC
Plastic housings with good resistance against chemicals and oils.
The resistance to aggressive media should be individually tested for your application. Further details on request.

Link to Product

Illustration



Product may differ from Image



Commercial data	
ECLASS-6.0	27279219
ECLASS-7.0	27279219
ECLASS-8.0	27279219
ECLASS-9.0	27440108

ETIM-5.0	EC002585
customs tariff number	85369010
GTIN	4048879056601
Packaging unit	1
Electrical data Supply	
Operating voltage DC	24 V
Current operating per contact max.	2 A
Total current max.	8 A
Device protection Electrical	
Degree of protection (EN IEC 60529)	IP65, IP67
Environmental characteristics Climatic	
Operating temperature min.	-20 °C
Operating temperature max.	70 °C
Additional condition temperature range	depending on cable quality
Connection type 2	
Family construction form	Cap
No. of poles	12
Family construction form	M8
Gender	female
Color contact carrier	black
Coding	A
No. of poles	3
PIN 1	+
PIN 3	-
PIN 4	S